



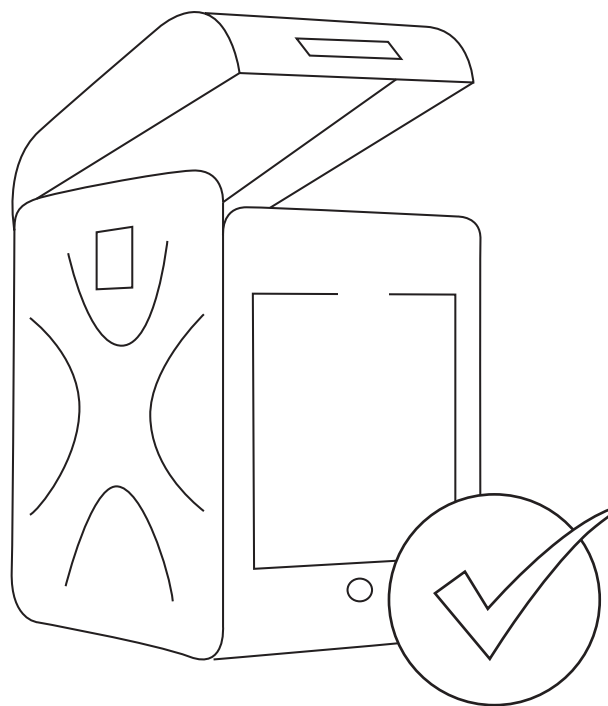
How to unpack and pack Lisa printer

We're glad that you decided to choose Sinterit Lisa 3D printer. We hope that our system will contribute to the development of your business.

This manual will help you unpack and start the printer for the first time easily and safely.

Sinterit team

For more information, please read the Sinterit Lisa printer User manual (included in the box with additional accessories) and visit www.sinterit.com/support-page.






GENERAL INFORMATION

Depending on your order, on the transport pallet you can find:

- a Sinterit Lisa printer in the Flightcase/ Protective Packaging,
- a box with the additional accessories,
- a box with two plates for carrying the prints,
- a box with powders (optional),
- a box with the Sinterit SANDBLASTER (optional),
- a box with the Sinterit POWDER SIEVE (optional).

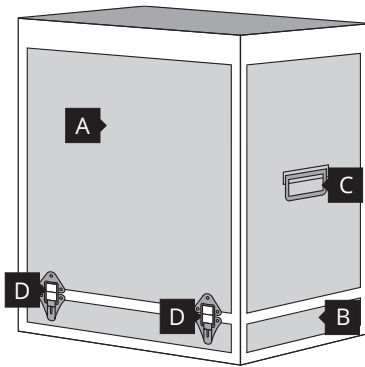
All boxes are labeled to help you get your machine ready for work quickly.

SOME IMPORTANT NOTICES

	IMPORTANT! Keep all the original boxes and transport protection. You may need them to pack the machine in the future if necessary.
	WARNING! Two adults are needed to unpack the printer safely! <u>The Flightcase/Protective Packaging with Lisa printer weighs approx. 60 [kg]/132 [lbs].</u> Do not lift it yourself!
	ATTENTION! <u>The printer weighs approx. 40 [kg]/90 [lbs].</u> Make sure that the furniture or surface that you plan to place the printer on is appropriate for such load.

OPTION 1

UNPACKING LISA PRINTER FROM THE FLIGHTCASE

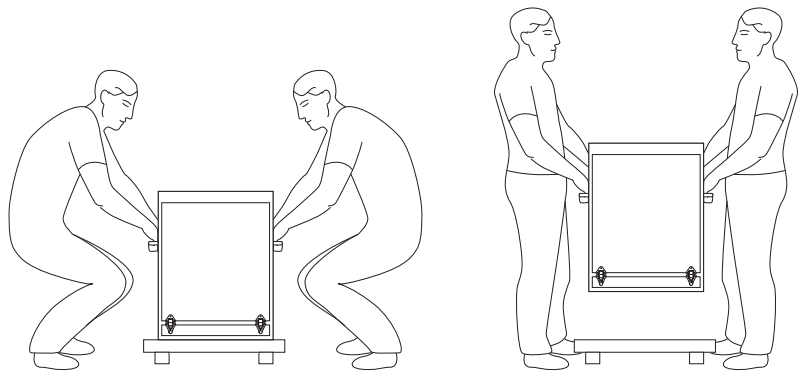


Elements of the Flightcase

- A. Cover
- B. Bottom
- C. Handles of the cover
- D. Locks of the cover

1. REMOVE THE FLIGHTCASE WITH THE PRINTER FROM THE TRANSPORT PALETTE

Grab the handles on both sides of the Flightcase **C** (two people needed). Carefully remove the Flightcase from the pallet and place it on a stable surface.

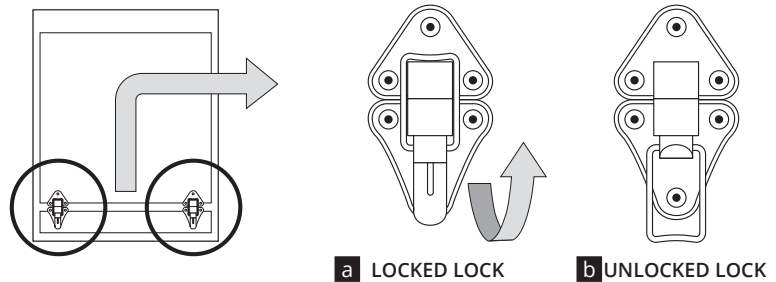


The correct transfer of the Flightcase from the pallet

2. UNLOCK THE LOCKS OF THE FLIGHTCASE COVER

Unlock 4 locks on the lower part of the Flightcase cover **D** (2 on the front and 2 on the back).

Grab the handle on the lower part of the lock and lift it up **a**. Remove the metal clamp from the cover **b**.



Unlocking the lock of a Flightcase's cover

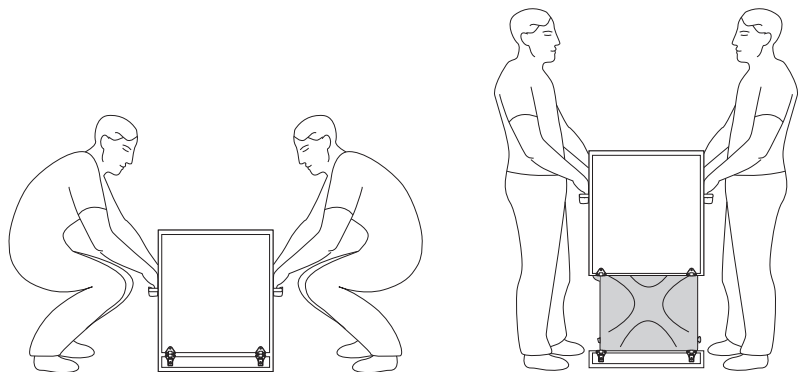
3. OPEN THE FLIGHTCASE

Carefully grab the handles of the cover on both sides of the Flightcase **C** (two people needed) and lift it.

Be careful, not to snag the printer!

Place the cover in a safe and stable place.

Remove all foils from the outside of the printer. Make sure that the printer hasn't been damaged during the transport. Check against any visible signs of it.

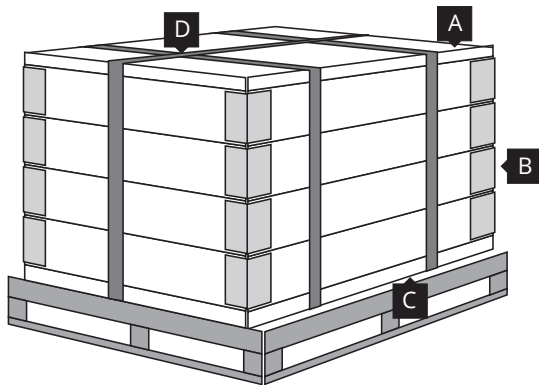


Correct lift of the cover from Lisa's Flightcase

The next steps are described in the chapter „Preparing for the first startup.“

OPTION 2

UNPACKING LISA PRINTER FROM PROTECTIVE PACKAGING



Elements of the Protective Packaging

- A. Pallet box lid
- B. Four pallet box collars
- C. Pallet box bottom
- D. White clamping straps

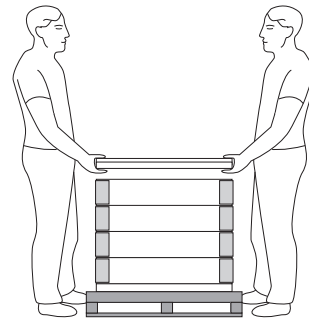
1. REMOVE ANY ADDITIONAL BOXES FROM THE PALLET

(If they are included with the order). You need easy access to the Protective Packaging with the Sinterit Lisa printer inside.

2. REMOVE THE THREE WHITE STRAPS **D** CLAMPING THE LID OF THE PALLET BOX

3. TAKE OFF THE PALLET BOX LID **A**

Two people needed. Put it in a safe place.

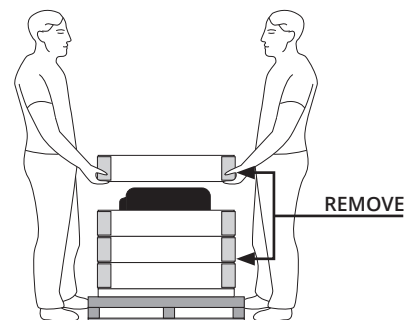


Removing the pallet box lid

4. GENTLY REMOVE THE PAPER PROTECTIONS INSIDE THE WOODEN BOX (from the top and around printer)

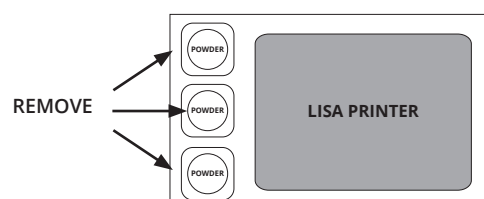
5. REMOVE, ONE BY ONE, THE FIRST THREE PALLET COLLARS

Two people needed. Fold collars flat and put them in a safe place (together with the pallet lid).



Removing the pallet collars

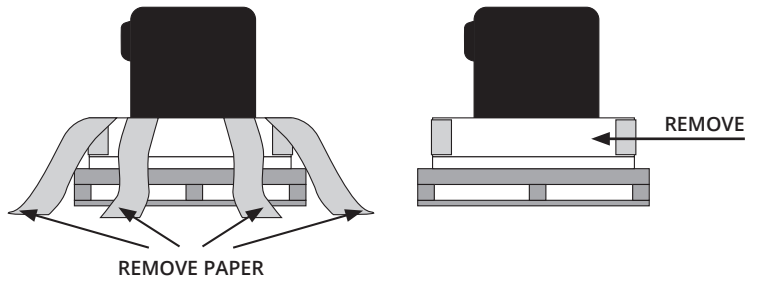
6. TAKE OUT THE POWDER CONTAINERS FROM THE INSIDE OF THE WOODEN BOX (if included)



Removing the powder containers

7. REMOVE THE LONG PAPER STRAPS AROUND THE PRINTER AND THEN THE LAST (4TH) PALLET COLLAR

You need help of another person. The printer can be tilted gently to remove paper straps.

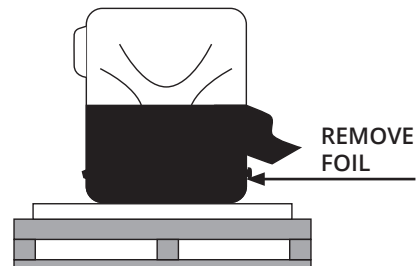


Removing the papers straps and last pallet collar

8. GENTLY REMOVE THE PROTECTIVE FOILS AROUND THE PRINTER (black stretch and bubble foil)

You need the help of another person. Make sure that the printer hasn't been damaged during transport. Check against any visible signs of it.

CAUTION! The Lisa printer is all wrapped in foils, also on the bottom.



Removing the foils around the Lisa printer

IMPORTANT!

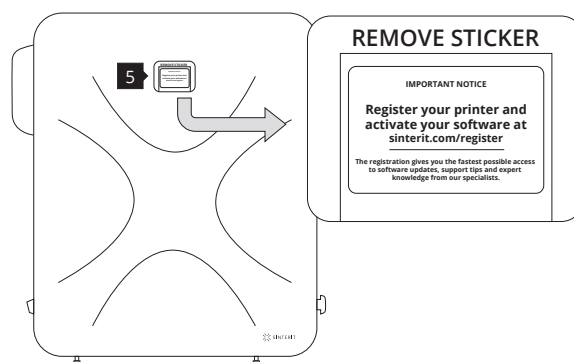
The next steps in preparing your printer will be the same for both Flightcase and Protective Packaging.



IMPORTANT!

Remember to register your Lisa printer and activate your software at sinterit.com/register.

The registration gives you the fastest possible access to software updates, support tips and expert knowledge from our specialists.



Remember to register your printer and remove the sticker from the LCD Screen **5**

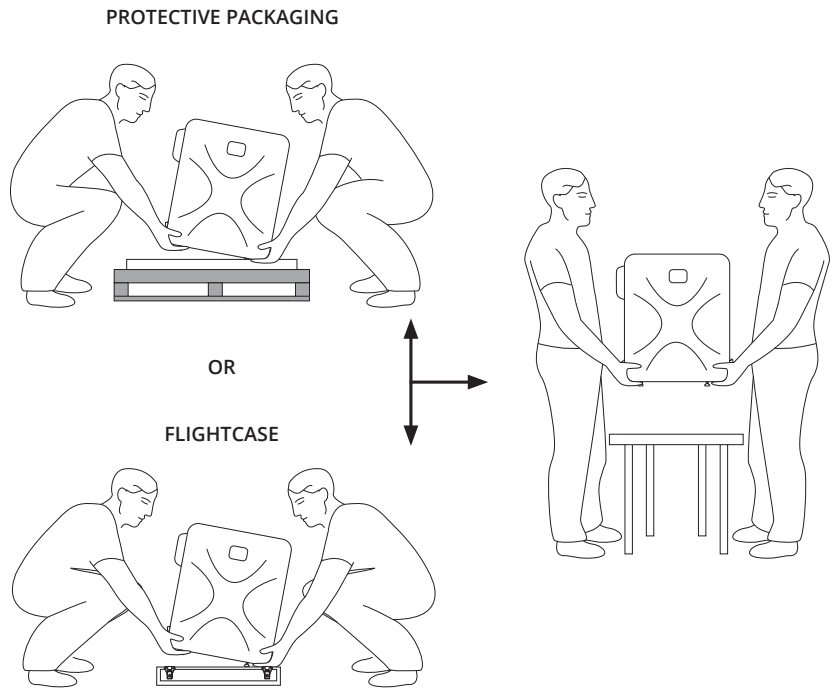
PREPARING FOR THE FIRST STARTUP

1. MOVE THE PRINTER FROM THE FLIGHTCASE/ PROTECTIVE PACKAGING TO THE TARGET WORKSTATION

Stand on the right and left sides of the printer (two people needed). Grab the bottom of the printer tightly with both hands (the printer can be tilted gently for a better catch on the bottom).

Carefully lift it up and place it on a stable surface. We recommend the target workstation.

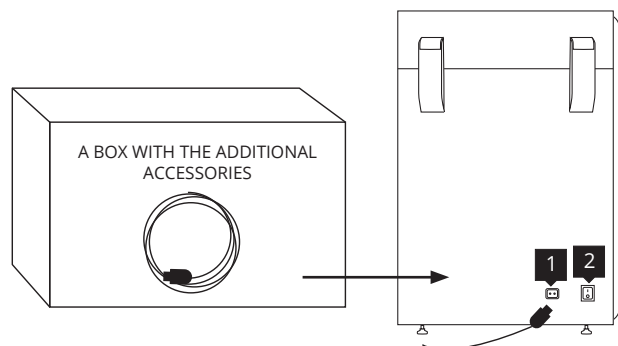
Ensure that the printer is placed in a location where its size and weight will be properly supported



Correct lift of printer from the Flightcase / Protective Packaging

2. CONNECT THE POWER CABLE AND TURN ON THE PRINTER

Connect the power cable to the printer's power socket **1** and then to the power supply. The power cable is included in the box with the additional accessories. Switch the power switch (from "0" to "1") located on the left side of the printer **2**.



The Power socket and the Power switch are located on the left side of the Lisa printer

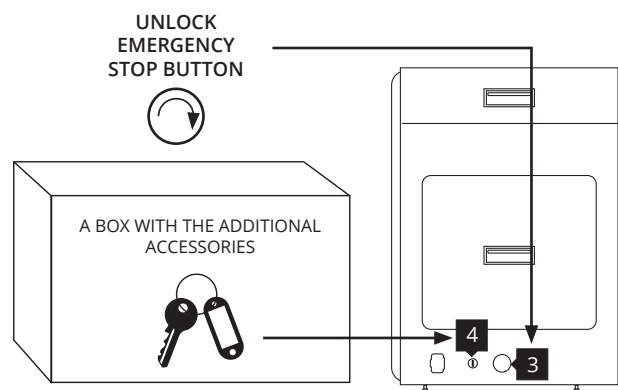
3. CHECK THE EMERGENCY STOP BUTTON

Check whether the Emergency Stop Button (red button on the right side of the printer) **3** is out. If not, rotate the black flange of the button clockwise at a quarter of a turn.

4. TURN THE PRINTER ON WITH THE IGNITION KEY

Place the Ignition key in the key slot **4** and turn it clockwise at a quarter of a turn.

Please wait until the main menu with four buttons appears on the LCD screen (it takes about 20 seconds).



The Safety Button and Key slot are located on the right side of the Lisa printer

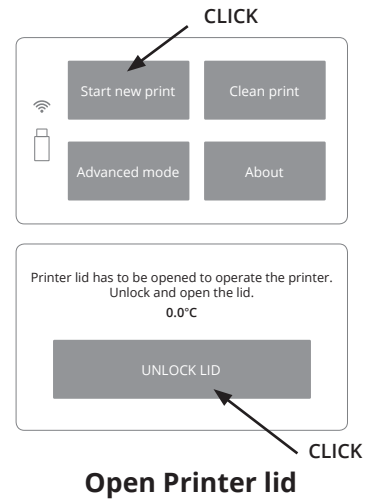
5. OPEN THE PRINTER'S LID AND REMOVE THE SECURITY FEATURES FROM THE INSIDE

To open the printer's Lid, press the START NEW PRINT button and next the UNLOCK LID button. The Lid's magnetic lock deactivates for 10 seconds. After 10 seconds, it will reactivate.

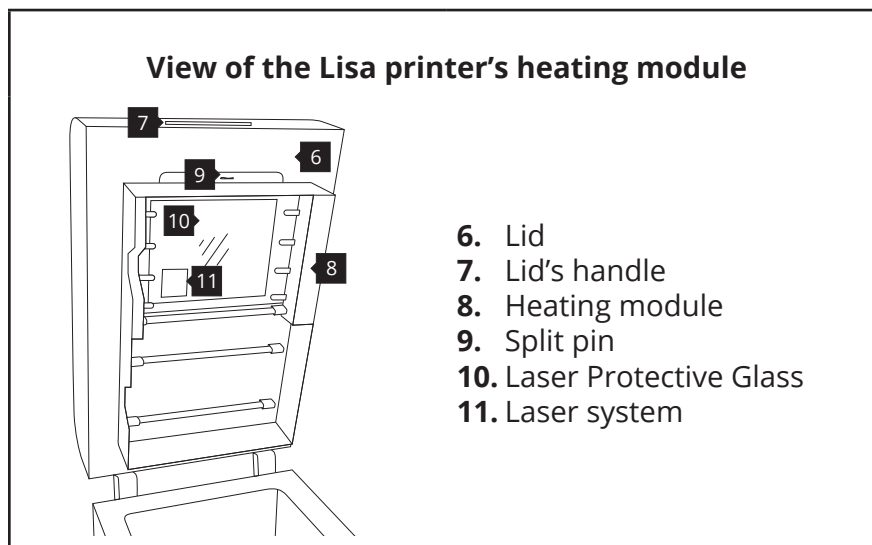
Softly press the Lid and then lift it using Lid's handle.

Be careful! The Lid is quite heavy.

Remove the protection from the printer's inside.



Open Printer lid



- 6. Lid
- 7. Lid's handle
- 8. Heating module
- 9. Split pin
- 10. Laser Protective Glass
- 11. Laser system



CAUTION!

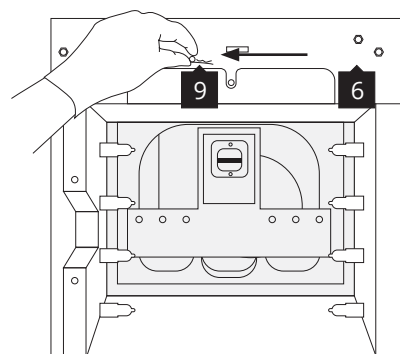
Beware of sharp edges. Put on safety gloves in order to protect yourself from injuring hands against the edge of the Heating module. The Protective Gloves are included in the plastic box with the additional accessories.

6. REMOVE THE PROTECTION CAP FROM THE HEATING MODULE

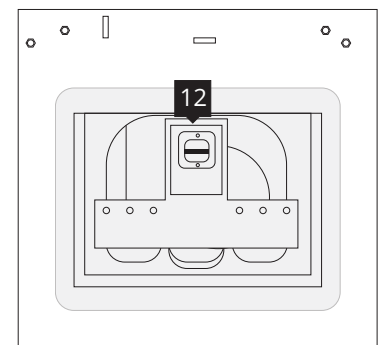
While holding the Heating module **8**, take out the Split pin **9** positioned on the top of the inner part of the Lid **6**.

Lower the Heating module to get access to the place dedicated for the Laser Protective Glass **10**.

Remove the plastic protection cap **12** of the laser system **11**. Save it with the other transport protections.



**Heating module
- removing split pin**



**View on the plastic protection
cap of the laser system**

Now you can install the Laser Protective Glass. Instructions can be found in the Lisa User Manual (box with additional accessories).

After installing the Laser Protective Glass, the device is ready for printing. *Enjoy!*

PREPARING LISA PRINTER TO BE PACKED

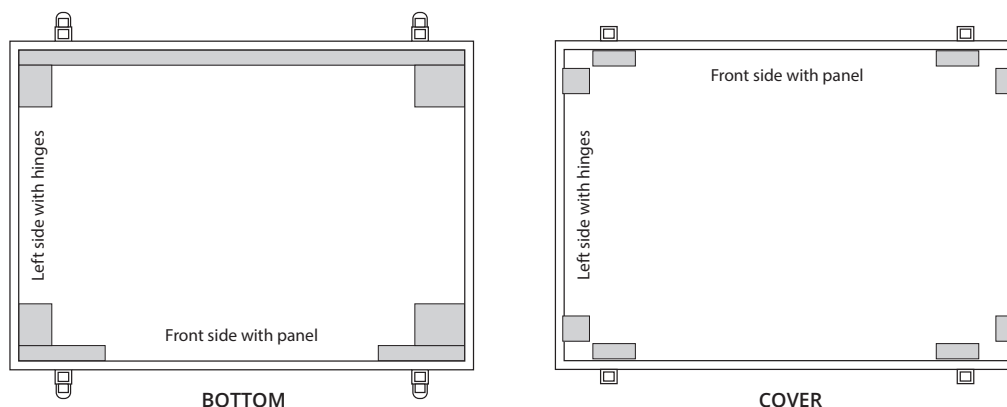
1. Turn on the printer and wait until the main menu is loaded.
2. Unlock the printer's Lid **6** (START NEW PRINT // UNLOCK LID). Remember, you only have 10 seconds to open it before the lock activates again.
3. For cleaning, turn off the printer.
4. Clean the printer from the powder (both BEDs and the space around them, OVERFLOW BIN, RECOATER).
5. Open the Heating module **8** (remove the Split pin **9** from the socket and lower the module gently. The full procedure is described in the Lisa User Manual/Maintenance and service).
6. Remove the Laser Protective Glass **10** and put it in the original box. Secure it with foil and tape for transportation.
7. Put on the original plastic cap **12** on the Laser system **11** and mount the Heating module back to the printer's Lid.
8. Check that the BEDs are at level with the printer housing and the RECOATER is located between the BEDs.
9. Close the printer's Lid.
10. Unplug the power cable and put it in the box with the additional accessories.

PACKAGING LISA PRINTER TO PROTECTIVE PACKAGING

1. Wrap the whole printer carefully with bubble foil and then with stretch wrap (also underneath the device).
2. Place the pallet bottom on the transport pallet.
3. Place the first pallet collar (with cut metal clips).
4. Place four long paper straps at the bottom of pallet box (the original or new – if you have this option).
5. Place the printer on the bottom of the Protective Packaging, on the paper protections (two people needed).
6. Wrap the printer securely in paper straps.
7. Place, one by one, the other 3 pallet collars. Be careful not to damage the printer (two people needed).
8. Insert left protective paper into the free space between the printer and the Protective Packaging edges and on top of the printer.
9. Put on the pallet lid.
10. Attach the pallet together with Protective Packaging with straps.

PACKAGING LISA PRINTER TO FLIGHTCASE

1. While holding the printer bottom, set it on the bottom of the Flightcase (two people needed). The stickers on the bottom of the Flightcase will help you to position the printer correctly. If there are no labels, note the positioning of filler foams (drawing below).



2. By holding the handles of the Flightcase cover **C**, put it on the printer (two people needed).
3. Match the cover **A** with the bottom **B** of the Flightcase. Look at the colours of the markings on the sides of the cover and the bottom (blue and red stickers).
4. Close the Flightcase with 4 cover locks **D**.
5. Place the Flightcase on the transport pallet, secure with clamping straps, foil and tape.



If you have any questions or problems with this manual, please contact us:

e-mail: contact@sinterit.com

www: sinterit.com/support-page

phone: +48 570 702 886

SINTERIT Sp.z o.o.
ul. Kalwaryjska 69/9
30-504 Krakow, Poland
www.sinterit.com
Contact: +48 570 967 854