



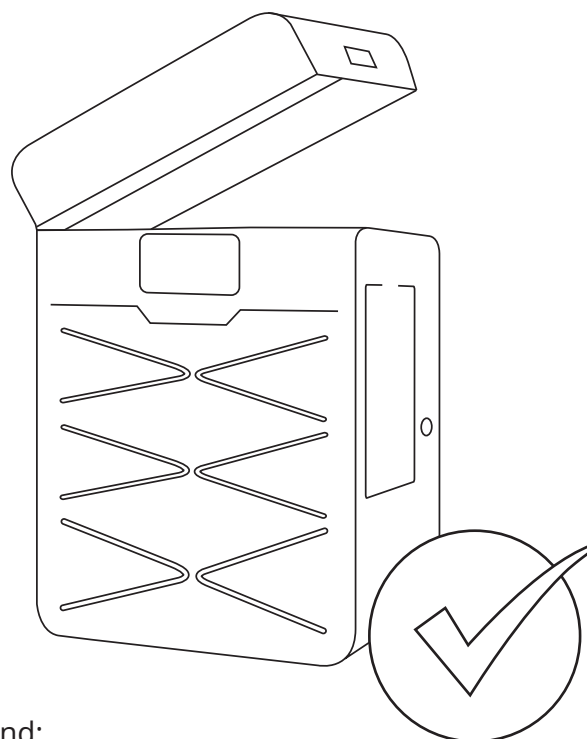
How to unpack and pack Lisa PRO printer

We're glad that you decided to choose Sinterit Lisa Pro 3D printer. We hope that our system will contribute to the development of your business.

This manual will help you unpack and start the printer for the first time easily and safely.

Sinterit team

For more information, please read the Sinterit Lisa PRO printer user manual (included in the box with additional accessories) and visit www.sinterit.com/support-page.



GENERAL INFORMATION

Depending on your order, on the transport pallet you can find:

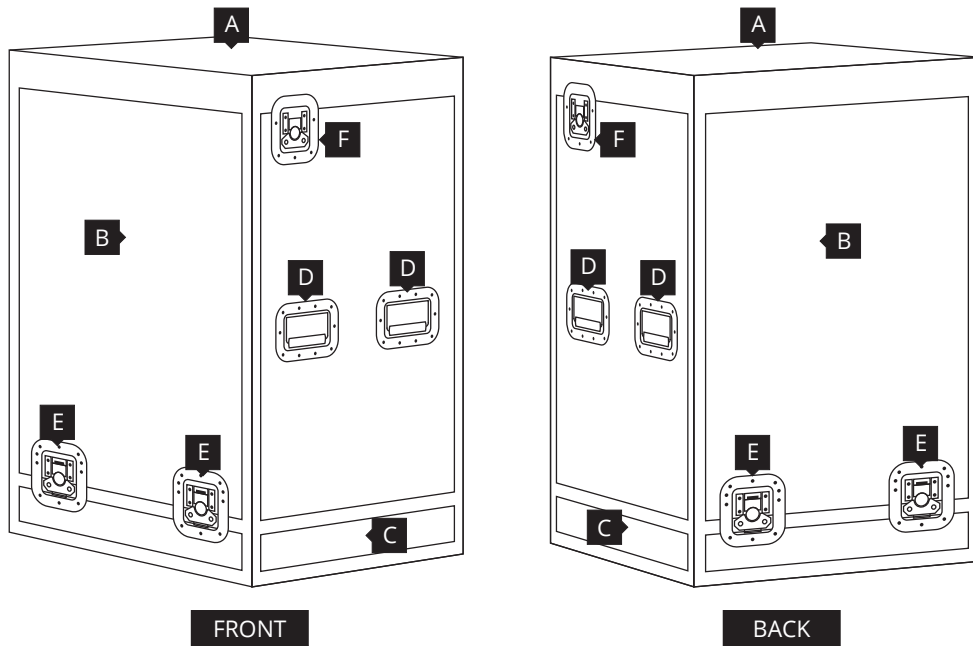
- a Sinterit Lisa PRO Printer in the Flightcase
- a box with the additional accessories
- a box with two plates for carrying the prints
- a box with powders (optional)
- a box with the Sinterit SANDBLASTER (optional)
- a box with the Sinterit POWDER SIEVE (optional)

All boxes are labeled to help you get your machine ready for work quickly.

SOME IMPORTANT NOTICE

	IMPORTANT! Keep all the original boxes and transport protection. You may need them to pack the machine in the future if necessary.
	WARNING! Two adults are needed to unpack the printer safely! <u>The Flightcase with Lisa PRO printer weighs approx. 120 [kg] / 265 [lbs].</u> Do not lift it yourself!
	ATTENTION! <u>The printer weighs almost 100 kg / 220 [lbs].</u> Make sure that the furniture or surface that you plan to place the printer on is appropriate for such load.

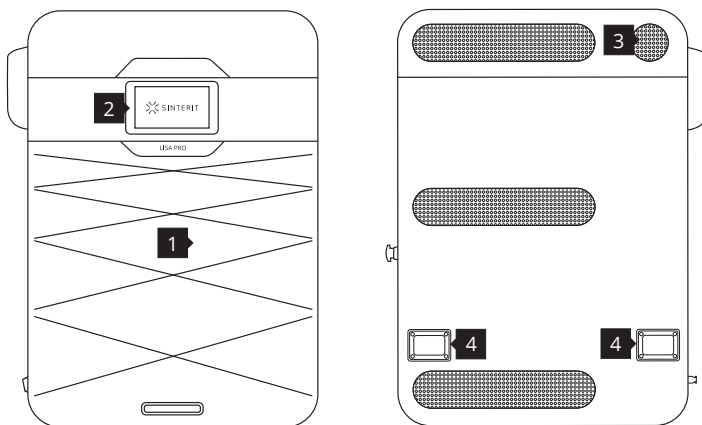
FLIGHTCASE OVERVIEW



Overview of Lisa PRO's Flightcase - elements of the Flightcase

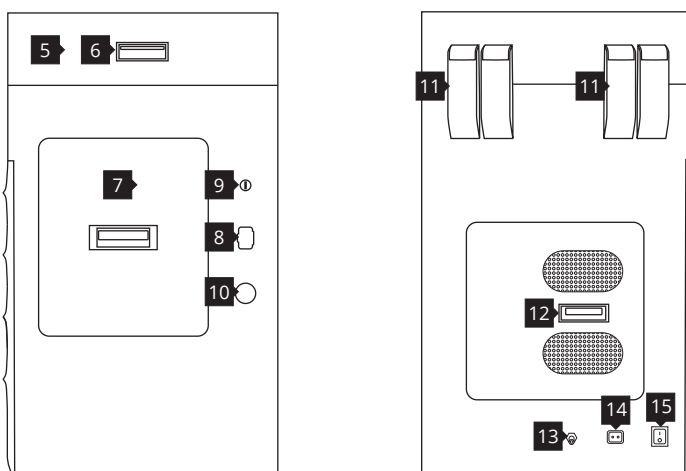
- A. Lid
- B. Cover
- C. Bottom
- D. Handles of the cover
- E. Locks of the cover
- F. Locks of the lid

SHORT DESCRIPTION OF SINTERIT LISA PRO PRINTER



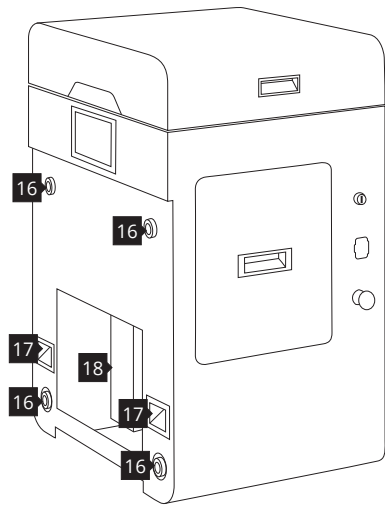
View of the printer's front and back side.

- 1. Removable front panel
- 2. LCD panel - camera view
- 3. Fan
- 4. Back holders



View of the printer's right and left side

- 5. Printer's lid
- 6. Lid's handle
- 7. Overflow Bin
- 8. USB port
- 9. Key switch
- 10. Safety button (E-STOP)
- 11. Lid's Hinges
- 12. Access to Nitrogen installation
- 13. Nitrogen gas input
- 14. Power socket
- 15. Power switch



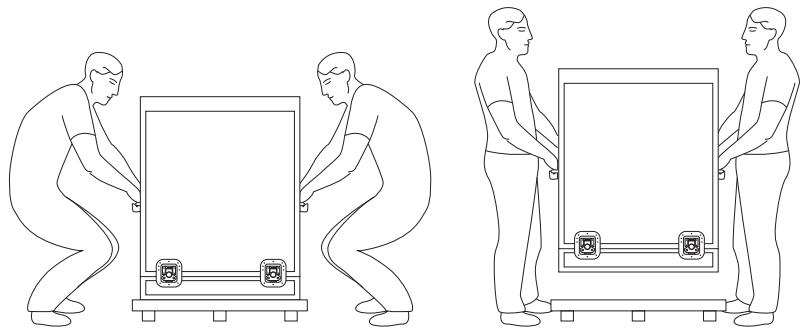
View of the printer without a front panel

- 16.** Magnetic fasteners
- 17.** Front holders
- 18.** Easy access to space under Beds

UNPACKING LISA PRO FROM FLIGHTCASE

1. REMOVE THE FLIGHTCASE WITH THE PRINTER FROM THE TRANSPORT PALETTE

Grab the two handles on both sides of the Flightcase **D** (two people needed). Carefully remove the Flightcase from the pallet and place it on a stable surface.

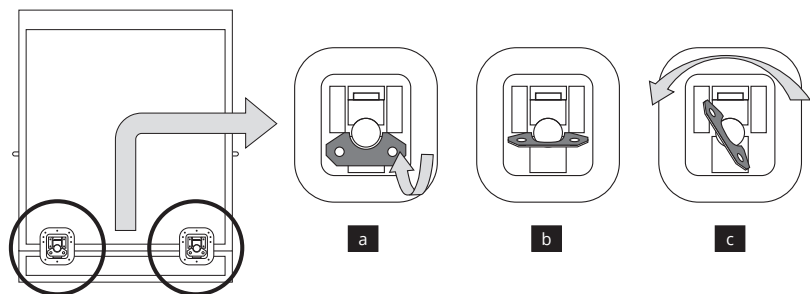


The correct transfer of the Lisa PRO Flightcase from the pallet

2. UNLOCK THE LOCKS OF THE FLIGHTCASE COVER

Unlock 4 locks on the lower part of the the Flightcase cover **E** (2 on the front and 2 on the back).

Turn the lock handle by 90 degrees **a**, **b**. Rotate the lock handle approx. 225 (180 + 45) degrees CCW until the hook opens **c**. Repeat on each of the four locks of the Flightcase cover.



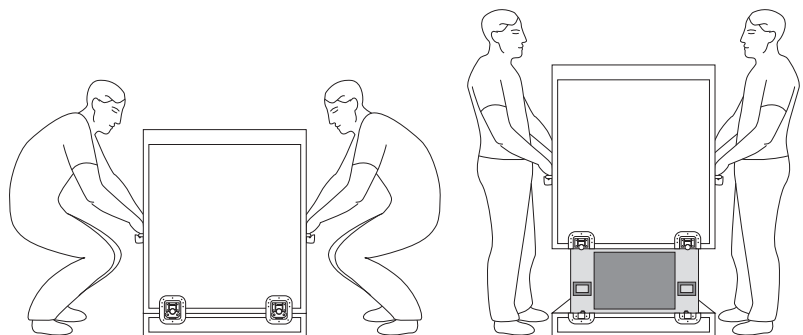
Unlocking the lock of a Flightcase's cover

3. OPEN THE FLIGHTCASE

Carefully grab the handles of the cover on both sides of the the Flightcase **D** (two people needed) and lift it to a height of minimum one meter.

Be careful, not to snag the printer!

Place the cover in a safe and stable place. Remove all foils from the outside of the printer. Make sure that the Lisa PRO hasn't been damaged during the transport. Check against any visible



Correct lift of the cover from Lisa's PRO Flightcase



IMPORTANT!

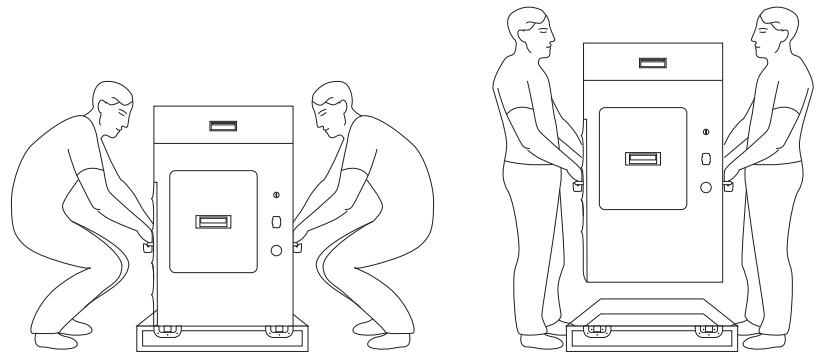
Remember to register your printer and activate your software at sinterit.com/register

The registration gives you the fastest possible access to software updates, support tips and expert knowledge from our specialists.

4. MOVE THE PRINTER FROM THE FLIGHTCASE TO THE TARGET WORKSTATION

Grab the printer holders **4**, **17** (two at the front and two at the back), carefully lift it up and place it on a stable surface. We recommend the target workstation.

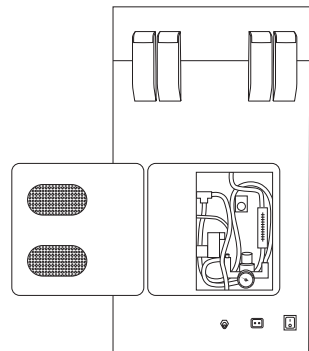
Ensure that the printer is placed in a location where its size and weight will be properly supported.



Correct lift of Lisa PRO from the Flightcase

5. REMOVE THE PROTECTION FROM THE NITROGEN CHAMBER

Open the Nitrogen installation chamber **12**. Remove the bubble wrap gently from the inside, watch out for the hoses. Close the chamber.



The Nitrogen installation chamber

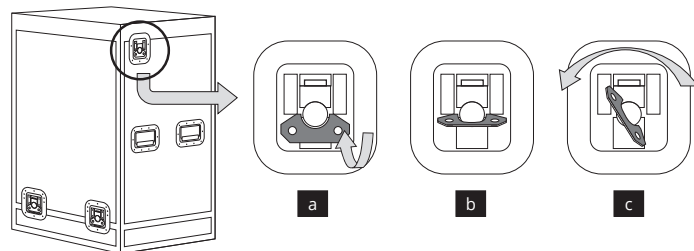
6. FIND THE REMOVABLE FRONT PANEL

The Removable Front panel is located in a recess under the lid of a Flightcase **A**.

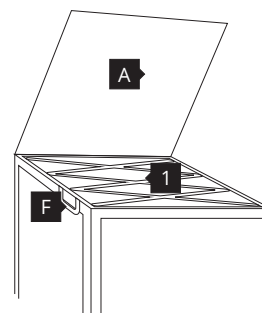
Unlock the locks of the Flightcase's lid **F** (one on the right and one on the left side of the top of Flightcase). The locks of the lid open the same way as the locks of Flightcase's cover.

Lift the Flightcase lid by 90 degrees. Inside there should be the Removable front panel of the Lisa PRO printer **1**. Lift up the panel.

Look out, it's heavy!



Unlocking the lock of the Flightcase's lid

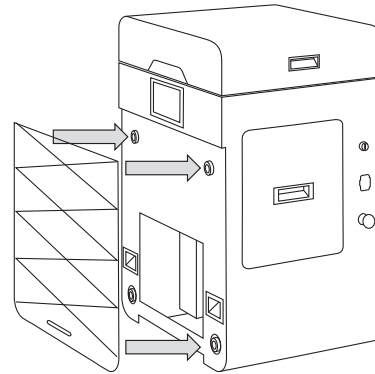


The raised lid of the Flightcase and showing recess with Replaceable front panel for Lisa PRO

7. INSTALL THE REMOVABLE FRONT PANEL

Holding the Removable front panel **1** parallel to the printer, mount it using the four magnetic fasteners **16** at the front.

After installing the Removable front panel, check that each of the four magnetic fasteners is connected (pull gently towards you).

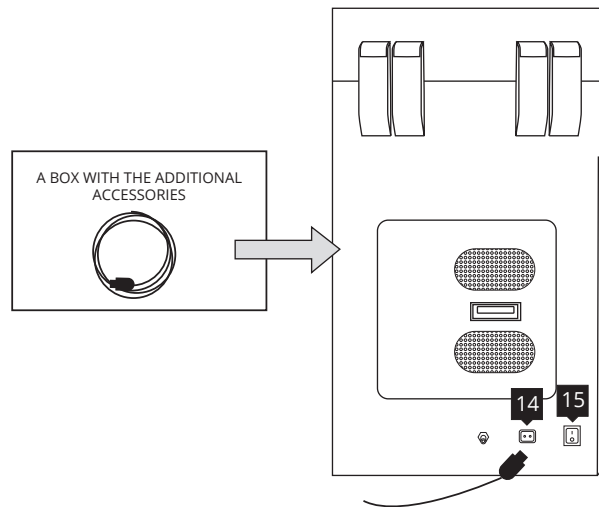


Correct mounting of the panel with the magnetic fasteners

8. CONNECT THE POWER CABLE AND TURN ON THE PRINTER

Connect the power cable to the printer's power socket **14** and then to the power supply. The power cable is included in the box with the additional accessories.

Switch the power switch (from "0" to "1") located on the left side of the printer **15**.



The Power socket and the Power switch are located on the left side of the printer.

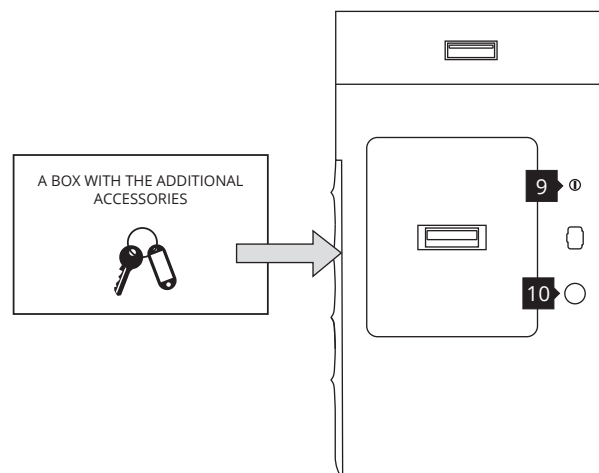
9. CHECK THE SAFETY BUTTON

Check whether the Safety button (red button on the right side of the printer) **10** is out. If not, rotate the black flange of the button clockwise at a quarter of a turn.

10. TURN THE PRINTER ON WITH THE IGNITION KEY

Place the Ignition key in the key switch **9** and turn it clockwise at a quarter of a turn.

Please wait until the main menu with four buttons appears on the LCD screen (it takes about 20 seconds).



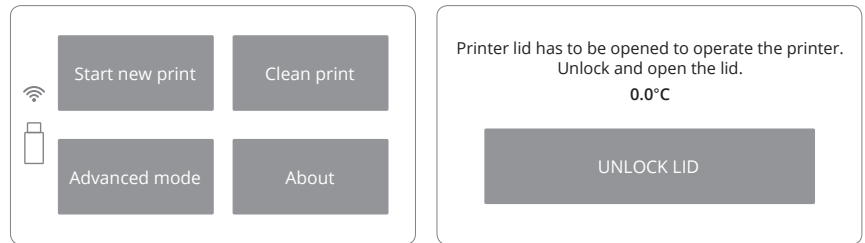
The Safety Button and Key switch are located on the right side of the printer

Remember to register your printer and remove the sticker from the screen.

11. OPEN THE PRINTER'S LID AND REMOVE THE SECURITY FEATURES FROM THE INSIDE

To open the printer's lid **5** press the START NEW PRINT button and next the UNLOCK LID button. The magnetic blockade deactivates for 10 seconds. After 10 seconds, it will re-activate.

Softly press the lid and then lift it using Lid's handle **6**.

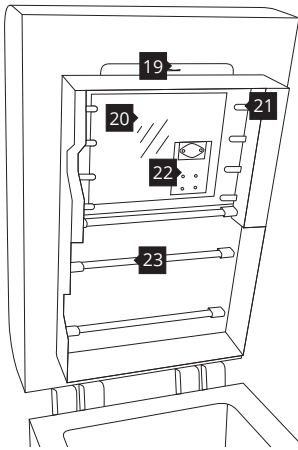


Main menu screen and Unlock lid screen

Be careful! The lid is quite heavy.

Remove the protection from printer's inside.

View of the printer's heating module



- 19. Split pin
- 20. Laser protective glass
- 21. Short Infrared heaters (white) four psc. on each side
- 22. Laser system
- 23. Long Infrared heaters (red)



CAUTION!

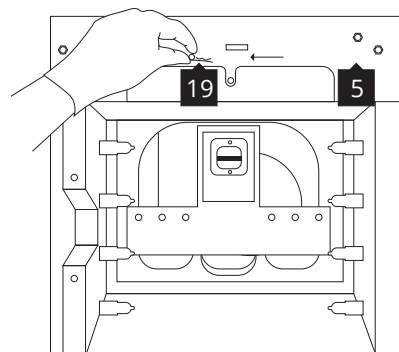
Beware of sharp edges. Put on safety gloves in order to protect yourself from injuring hands against the edge of the heating module. The safety gloves are included in the plastic box with the additional accessories (in a smaller box).

12. REMOVE THE PROTECTION FROM THE HEATING MODULE

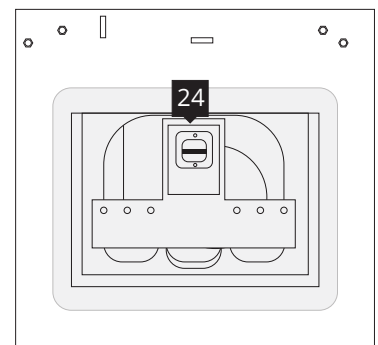
While holding the heating module, take out the split pin **19** positioned on the top of the inner part of the lid **5**.

Lower the heating module to get access to the place dedicated for the LASER PROTECTIVE GLASS.

Remove the plastic protection cap of the laser system **24**.



Heating module - removing split pin



View on the plastic protection cap of the laser system

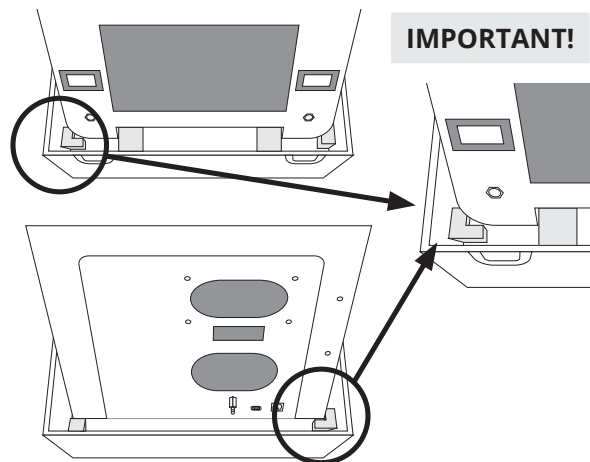
Now you can install the LASER PROTECTIVE GLASS. Instructions can be found in the Lisa PRO manual (both in the short and full version). After installing the LASER PROTECTIVE GLASS, the device is ready for printing.

Enjoy!

PACKAGING LISA PRO TO FLIGHTCASE

1. Turn on the printer and wait until the main menu is loaded.
2. Unlock the printer's lid **5** (START NEW PRINT // UNLOCK LID). Remember, you only have 10 seconds to open it before the blockade activates again.
3. Turn off the printer (turn the key a quarter turn counterclockwise and switch off the power switch from „1“ to „0“).
4. Clear the printer from the powder (both BEDs and the space around them, OVERFLOW BIN, RECOATER).
5. Open the heating module (remove the split pin from the socket and lower the module gently. The full procedure is described in the Shortened User Guide – Chapter 2, Subchapter A).
6. Remove the LASER PROTECTIVE GLASS **20** and put it in the original box. Secure it with foil and tape for transportation.
7. Put on the original plastic cap on the laser system **24** and mount the heating module back to the printer's lid.
8. Check that the BEDs are at level with the printer housing and the RECOATER is located between the BEDs.
9. Close the printer's lid.
10. Unplug the power cable and put it in the box with the additional accessories.
11. Unplug the nitrogen hose from the nitrogen input **13**.
12. Insert the bubble wrap gently into the nitrogen chamber **12**, watch out for the hoses. Close the chamber.
13. Dismantle the Removable front panel **1**.
 - Grasp the panel in the middle of its top and bottom edge. Pull the bottom edge firmly while holding the top edge.
 - Disconnect all four magnetic fasteners **16** between the panel and the printer front side.
 - Hide the Removable front panel in the recess under the Flightcase lid.

14. While holding the holders in the printer **4**, **17** set the device on the bottom of the Flightcase (two people needed). The stickers on the bottom of the Flightcase will help you to position the printer correctly. If there are no labels, note the positioning of filler foams, especially the L-shaped foam.



15. By holding the four handles of the the Flightcase cover **D**, put it on the printer (two people needed).
16. Match the cover **B** with the bottom **C** of the Flightcase. Look at the colours of the markings on the sides of the cover and the bottom of the Flightcase (blue and red stickers).
17. Close the the Flightcase with 4 cover locks **E**.
18. Place the Flightcase on the transport pallet, secure with foil and tape.



If you have any questions or problems with this manual, please contact us:

e-mail: contact@sinterit.com, support@sinterit.com

www: sinterit.com/support-page

phone: +48 570 702 886

SINTERIT Sp.z o.o.
ul. Kalwaryjska 69/9
30-504 Krakow, Poland
www.sinterit.com
Contact: +48 570 967 854